

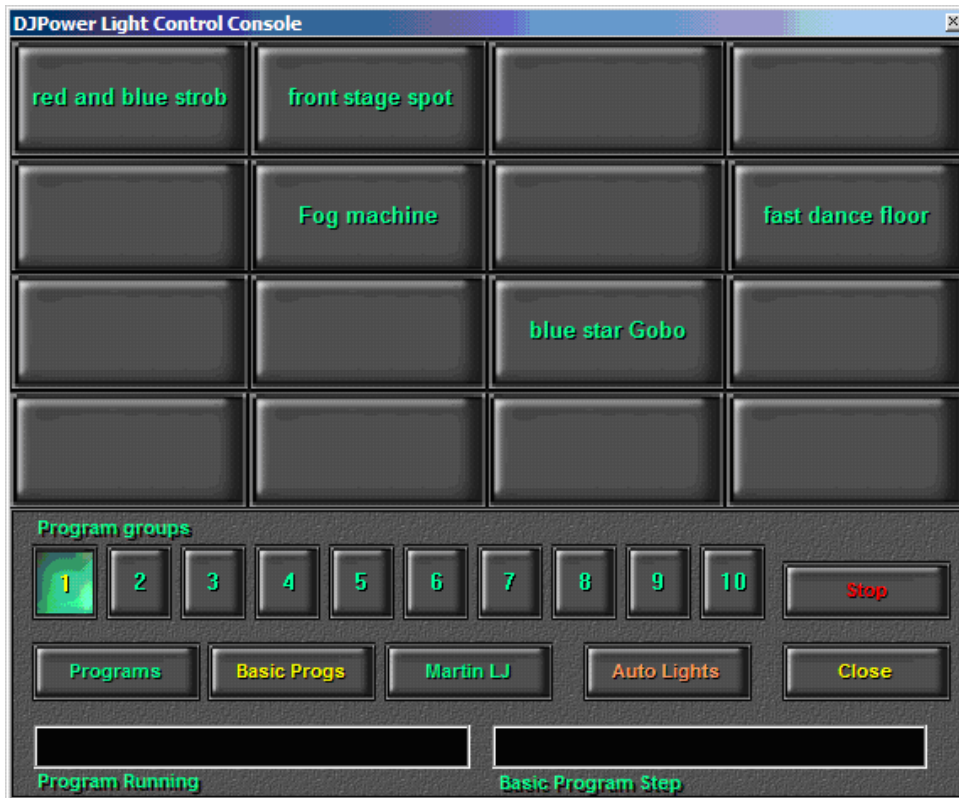
DJPower LIGHTING Overview

This tool provides a strong interaction between the light program and the DJPower audio/video playback. It can control any DMX lighting controller and specifically works hand to hand with the Martin LightJockey controller.

The basic concept is for Light Jockey to run in the back ground but have it take commands from DJPower. This becomes very useful in associating songs or videos to sequences and cues of LightJockey. Manual control can be set though the Hot buttons located in DJPower Light Control Console screen. By using a DMX controller, DJPower can control and synchronize music with lights, fog machines, and even water jets.



After all the cues and sequences are programmed for your light fixtures, open DJPower and click on the Lights icon located on the bottom right-hand corner of the main DJPower screen. This will open the window below.



The DJPower Light Control Console consists of 160 hot buttons which can be assigned to any lighting program and reassigned to different programs if desired. How to assign the programs to buttons will be covered in later discussion. The next set of buttons are Program Groups (AKA layer buttons). There are ten layers of hot buttons in the Light Control window. Each layer consists of 16 hot buttons. Thus there are a total 160 hot buttons which reside in 10 layers. The active layer is shown by the lighter color of layer buttons.



Next set of buttons are programming and control buttons.



We will discuss the following conditions:

- 1) Martin LightJockey running on the same computer.
- 2) DMX machines running externally

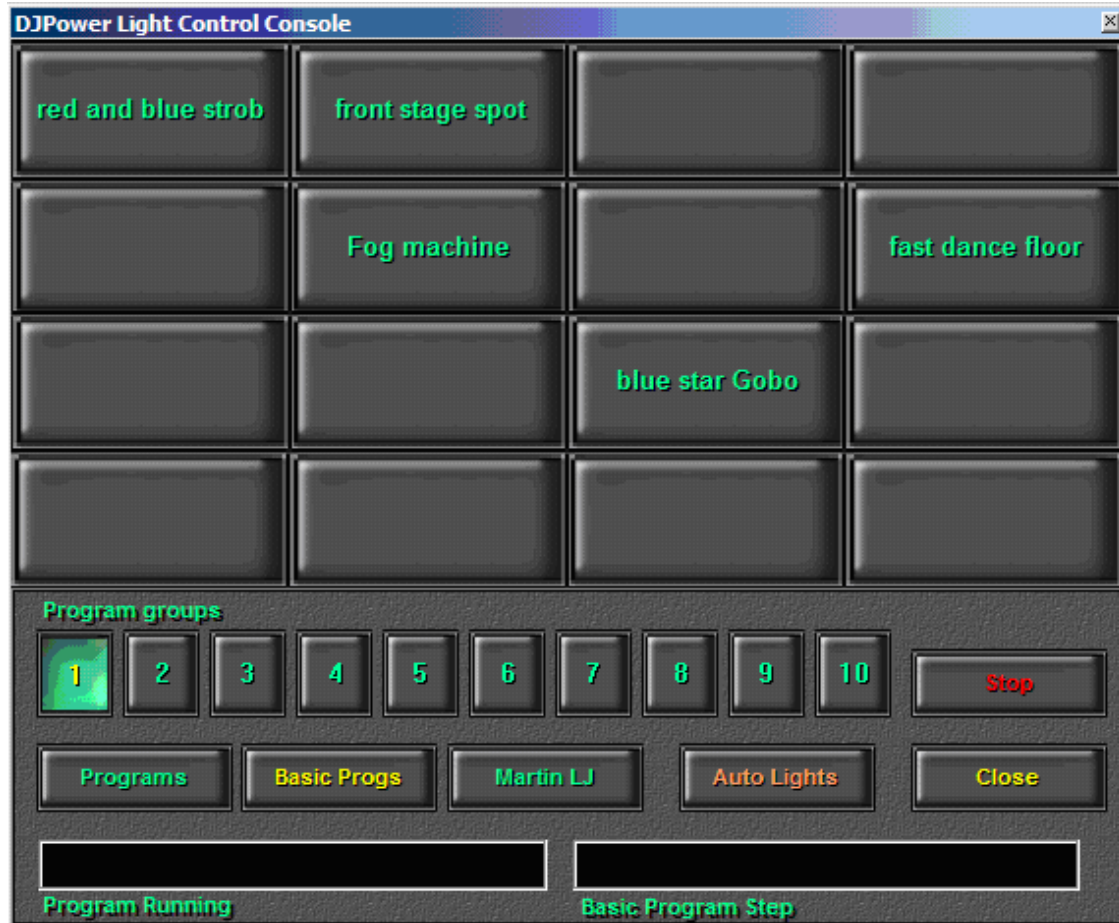
Auto Lights Programming

This feature allows for the automated running of sequences and programs. It turns the different light sequences on in random or designed order. This program continues until stopped by clicking on STOP button.

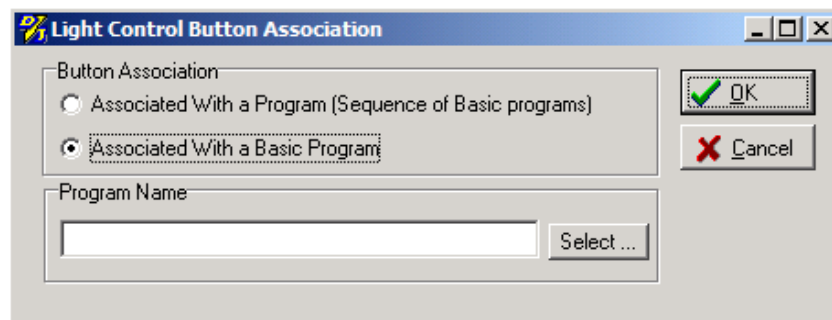


Assigning a Sequence or a Program to a Hot Button

One of the great features of Light Control Console is to have manual control of the lights by hot buttons.



1) Click on an empty button. This will open the Light Control Button Association window. At this point, the button can be assigned to a program or to a sequence.




TIME SEQUENCING

This is an outstanding feature to assign certain parts of an audio or video to desired sequences or cues. Most of the production elements require this feature to enhance the effect of the production. Time sequencing has never been easier with the DJPower Time Sequence programming.

NOTE: This requires the Light Control Console hot buttons to be pre-programmed.

Creating the Time Sequence:

- 1) In the main DJPower screen, select a song to associate with one or more sequences during the playback and put it in the top of Song to Play List.
- 2) Click on the Light Control Panel.
- 3) Click on the Auto Time Sequence button. This will highlight the button to indicate that it is active.
- 4) Click on the Play button on the main DJPower screen. (Or hit the “F5” button on the keyboard). This will start the playback of the desired song.
- 5) At any given point in the song playback, click on the desired hot button to be associated with that point of the song. This will assign the sequence or cue of that button to that particular point of the song.
- 6) Repeat step 5 as desired throughout the song.

A rectangular button with a dark grey background and a thin black border. The text "Auto Time Sequence (off)" is displayed in a yellow-orange font.A rectangular button with a dark grey background and a thin black border. The text "Auto Time Sequence (on)" is displayed in a yellow-orange font.A rectangular button with a dark grey background and a thin black border. The text "blue_green wheel" is displayed in a green font.